



CAATE

Commission on Accreditation
of Athletic Training Education

2022 CAATE 

Accreditation Conference

October 7-8, 2022 / *Atlanta, Georgia*



CAATE

Commission on Accreditation
of Athletic Training Education

Assuring Quality with the 2022 Standards as a Foundation for Success with Program Improvement

Maggy Rule, MS, AT, ATC
Sports Medicine Clinical Lead

Chad Clements, PhD, ATC
Director, Athletic Training Services



CAATE Accreditation Conference 2022
Maggy Rule

I have no relevant financial relationships to disclose.

CAATE Accreditation Conference 2022
Chad Clements

I have no relevant financial relationships to disclose.





**Somewhere in the
middle?**

Just starting?

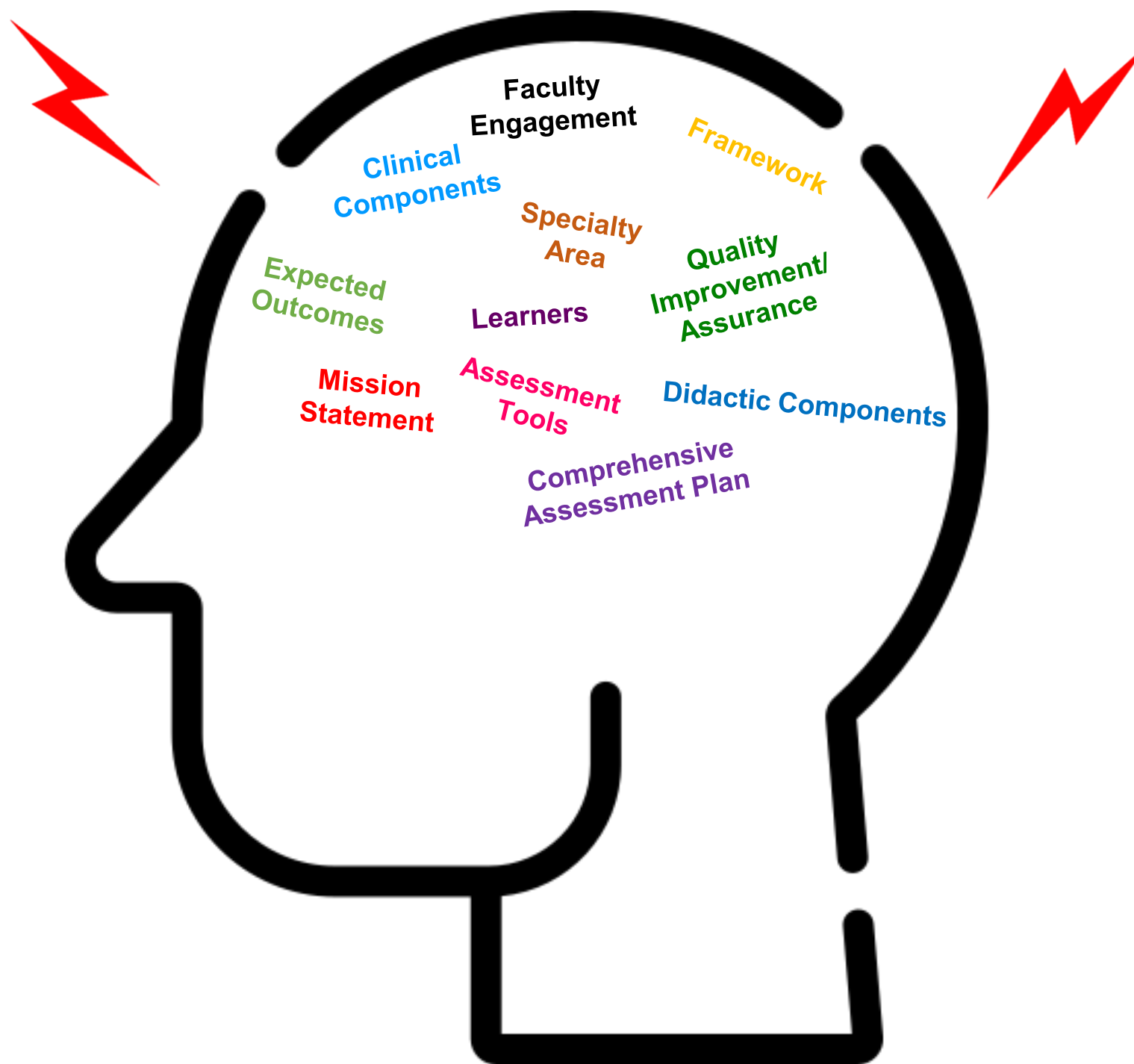
**How are you measuring
'success'? Who is helping you
decide that? What QI/QA
resources do you have?**

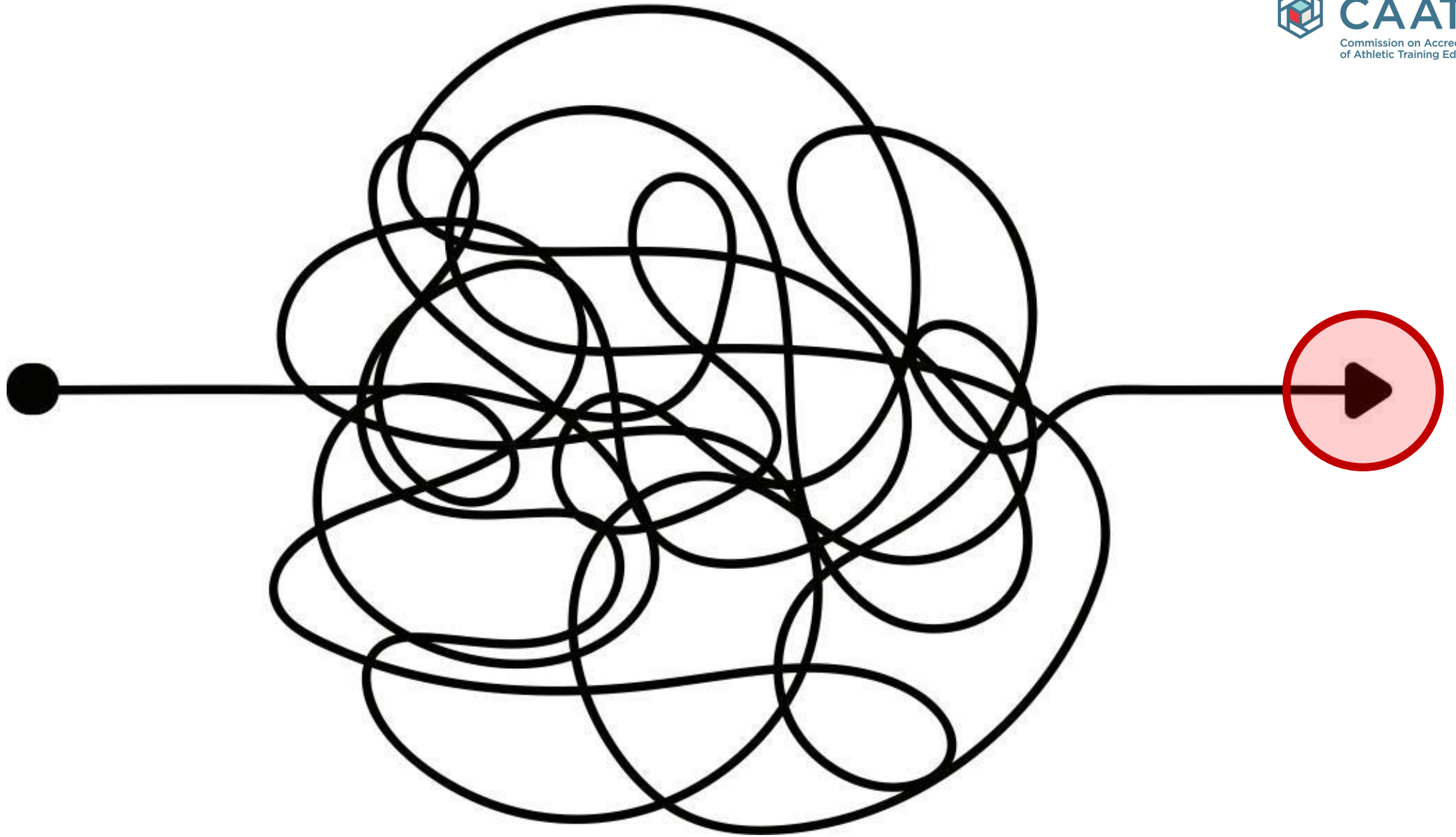
**How have you been engaging
your stakeholders? How did
you choose your assessment
tools?**

Been doing this a while?

**What successes and
challenges have you had
updating to the 2022
standards?**







Our goal is to describe an example of how to:



Develop a strategic approach to the development of the framework that engages staff and integrates stakeholders



Analyze the programmatic comprehensive assessment plan to ensure consistent and effective improvement



Appraise data to systematically ensure targeted programmatic improvement is integrated into the program's action plan

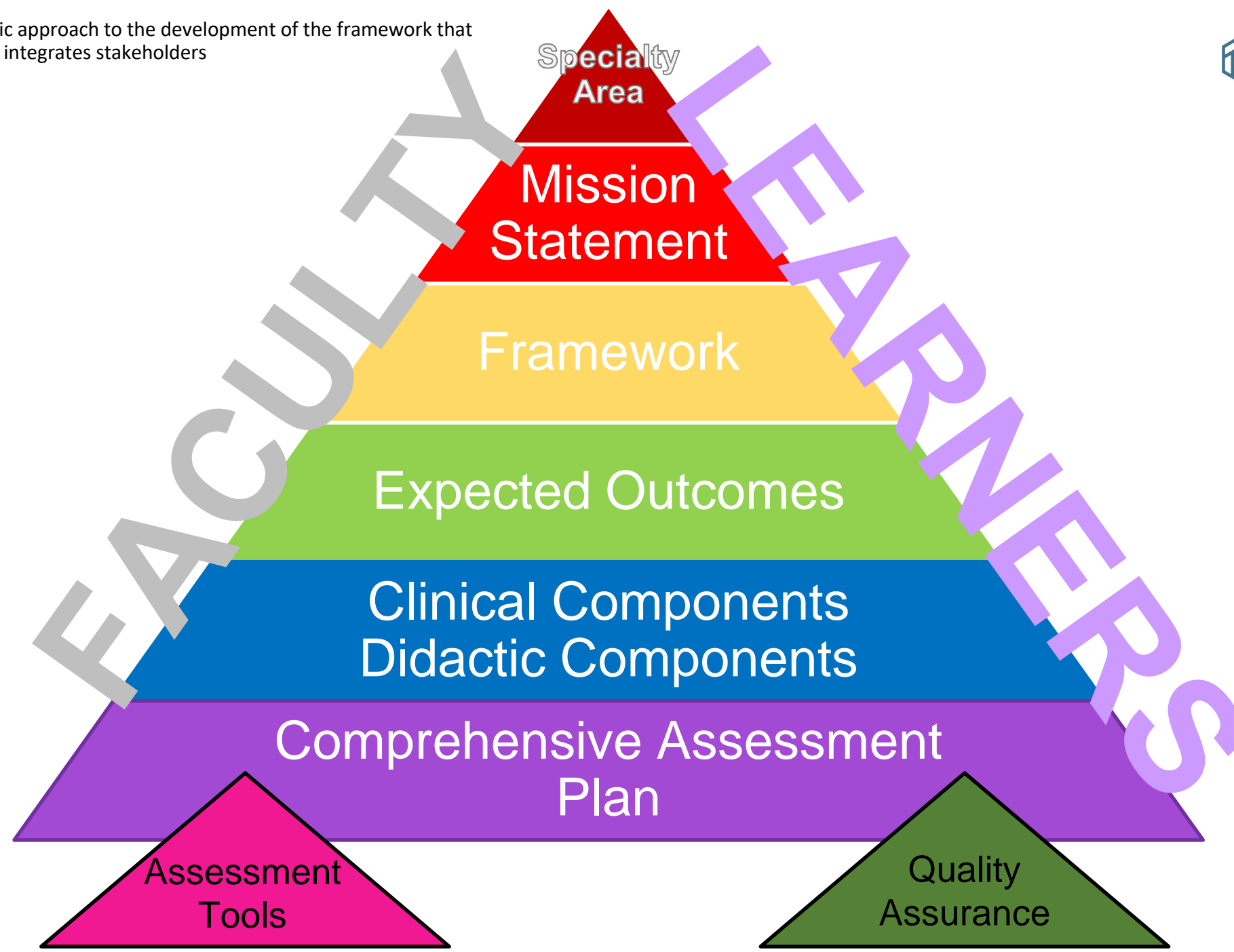


Develop a strategic approach to the development of the framework that engages staff and integrates stakeholders





Develop a strategic approach to the development of the framework that engages staff and integrates stakeholders





Develop a strategic approach to the development of the framework that engages staff and integrates stakeholders

Learner outcomes

Patient Care & Procedural Skills

Responds to each patient's unique characteristics, needs and goals.

Develops and implements a comprehensive care plan for each patient

Physical Examination (systems-based examination adapted for health conditions and contextual factors)

Quality Improvement

Improves systems in which the athletic trainer provides care

Works effectively within an interprofessional team

Specialty Competency (Ortho, Peds, Rehab, etc)

Gathers and synthesizes essential and accurate information to define each patient's clinical problem(s)

Effectively manages patients with complex conditions (specific to specialty)

Lectures

Labs

Cultural Competence

Clinical Care

QI/Research

Peer to Peer

Journal Clubs



Develop a strategic approach to the development of the framework that engages staff and integrates stakeholders

Program effectiveness outcomes

We will deliver a high-quality and effective program

Graduates will complete the requirements to take a specialty certification exam

Learners will report a high-quality experience in all components of the program

Graduates will be employed in their area of specialization within 6 months

Learners who enter the program will complete the program

Exit interviews

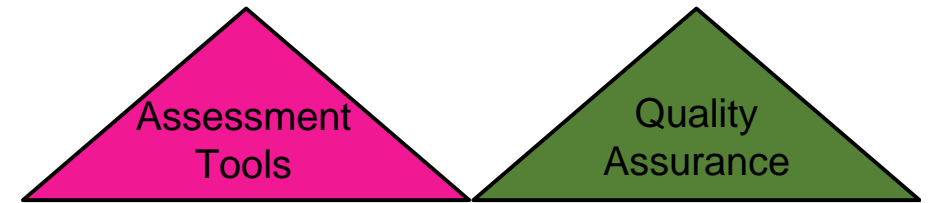
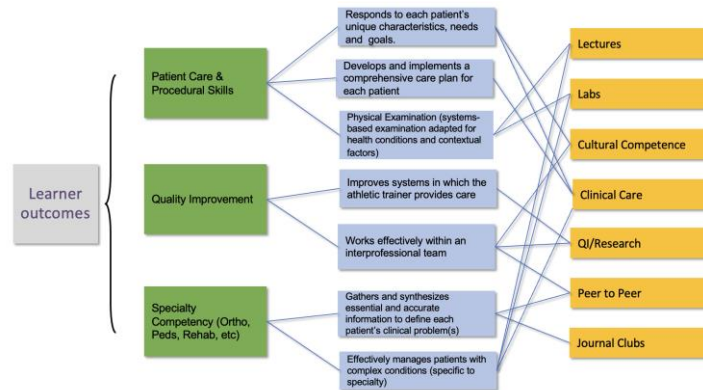
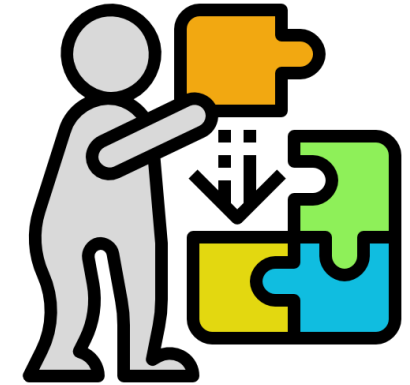
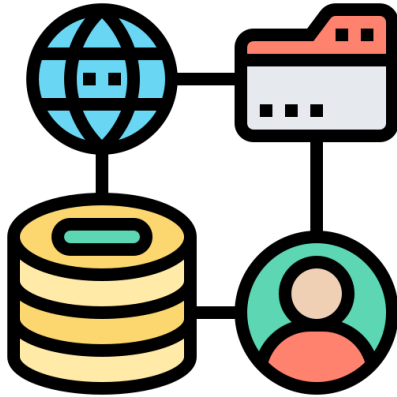
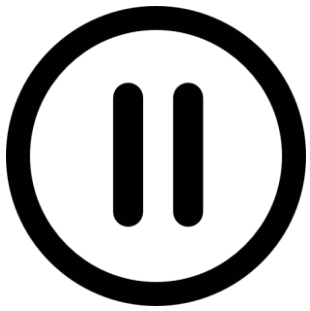
Mentor assessment

Assessment of clinical experiences

Assessment of didactic content

Assessment of projects

Alumni/employer survey





Analyze the programmatic comprehensive assessment plan to ensure consistent and effective improvement

Patient Care & Procedural Skills

Develops and implements a comprehensive care plan for each patient

Responds to each patient's unique characteristics, needs and goals.

Assessment

Summative assessment tool

Chart Review (rubric)

Self-assessment/reflection

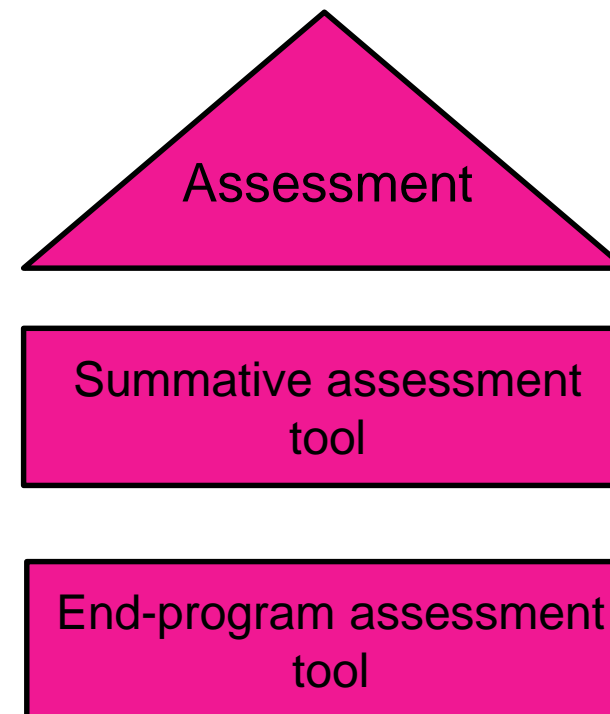


Analyze the programmatic comprehensive assessment plan to ensure consistent and effective improvement

Self assessment: My ability to develop a care plan improved...	Strongly Disagree 1%	Disagree 66%	Agree 30%	Strongly Agree 3%
---	-------------------------------------	-------------------------	----------------------	------------------------------

Summative Assessment Tool: Patient care/procedural skills	Unprepared 1%	Supervised practice 33%	Competent 50%	Advanced 16%
--	--------------------------	------------------------------------	--------------------------	-------------------------

Chart review	1: Many missing 0%	2: Some components 0%	3: Most components 2%	4: All components 98%
---------------------	-------------------------------	----------------------------------	----------------------------------	----------------------------------



We will deliver a high-quality and effective program

Graduates will complete the requirements to take a specialty certification exam

Learners will report a high-quality experience in all components of the program

There is a program focus on preparing learners to promote and model behaviors fundamental to all healthcare professionals, including the ability to:

#	Field	Strongly Disagree		Disagree		Agree		Strongly Agree	
1	practice patient-centered care, using the needs, concerns, and preferences of the patient to guide clinical decision-making.	0.00%	0	0.00%	0	12.50%	1	87.50%	7
2	provide athletic training services in a manner that uses evidence to inform practice.	0.00%	0	0.00%	0	12.50%	1	87.50%	7
3	use systems of quality assurance and quality improvement to enhance client/patient care.	0.00%	0	12.50%	1	25.00%	2	62.50%	5
4	practice in collaboration with other healthcare and wellness providers.	0.00%	0	0.00%	0	37.50%	3	62.50%	5
5	communicate effectively with all those involved in health care of the patient, using appropriate oral and written syntax.	0.00%	0	0.00%	0	12.50%	1	87.50%	7
6	use principles of informatics, including strategies to acquire, store, retrieve and use information to improve healthcare delivery.	0.00%	0	0.00%	0	37.50%	3	62.50%	5



Appraise data to systematically ensure targeted programmatic improvement is integrated into the program's action plan



Outcome	Assessment	Individual(s) responsible	Results
Provide patient care that is compassionate, appropriate, and effective for the treatment of health problems and the promotion of health	Summative assessment tool	Program director	66% competent or advanced 33% supervised or unprepared
	Chart review	Core faculty	100% all or most components of documentation included
	Self-assessment (improved ability to develop care plan)	Program director	67% disagree or strongly disagree 33% agree or strongly agree
We will deliver a high quality and effective program	Summative assessment tool	Program director	66% were eligible for a specialty certification exam
	End-program assessment	Core faculty #1	99.9% agree or strongly agree re: program focus on core competencies



Appraise data to systematically ensure targeted programmatic improvement is integrated into the program's action plan

Outcome	Assessment	Results	Action and Plan
Provide patient care that is compassionate, appropriate, and effective for the treatment of health problems and the promotion of health	Summative assessment tool	66% competent or advanced 33% supervised or unprepared	
	Chart review	100% all or most components of documentation included	
	Self-assessment	67% disagree or strongly disagree 33% agree or strongly agree	
We will deliver a high quality and effective program	Summative assessment tool	66% were eligible for a specialty certification exam	
	End-program assessment	99.9% agree or strongly agree re: program focus on core competencies	

Summary...

